

Lowrance Product Bulletin:

iWAY™ 500c automotive GPS

02-10-06:

iWAY™ 500c Software & Mapping Data DVD Update

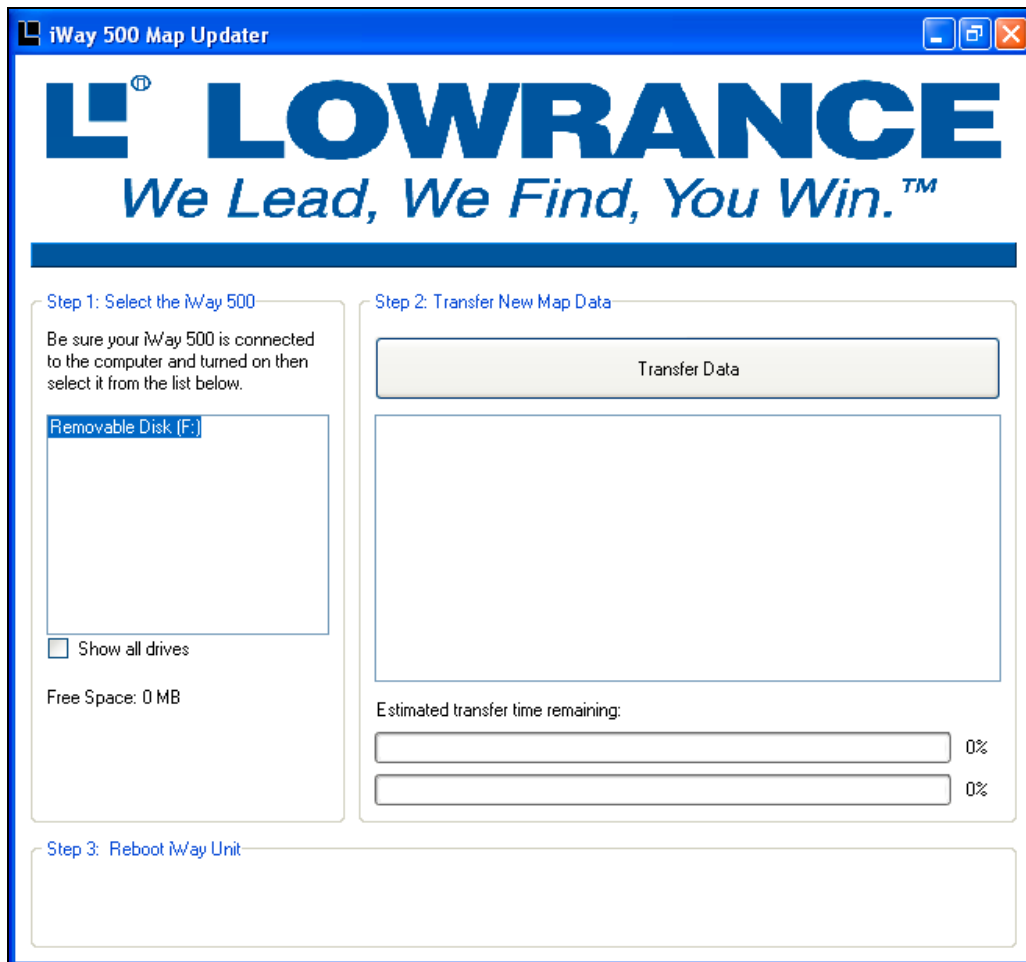
This update, contained on a DVD disc, will update the software, infoUSA® points-of-interest and NAVTEQ® Turn-By-Turn mapping data in your iWAY™ 500c GPS unit.

NOTE: The update will clear the Recent Find list and restore the Overlay Data to the default settings. *The update is contained on a DVD disc. Your computer must have a standard DVD drive to run the update.* You cannot use this DVD in a standard CD-ROM drive. This update will upload large amounts of data to the unit, then you will be prompted to re-start the unit to finish the process.

PLEASE ALLOW 3-4 HOURS TO COMPLETELY UPDATE THE UNIT.

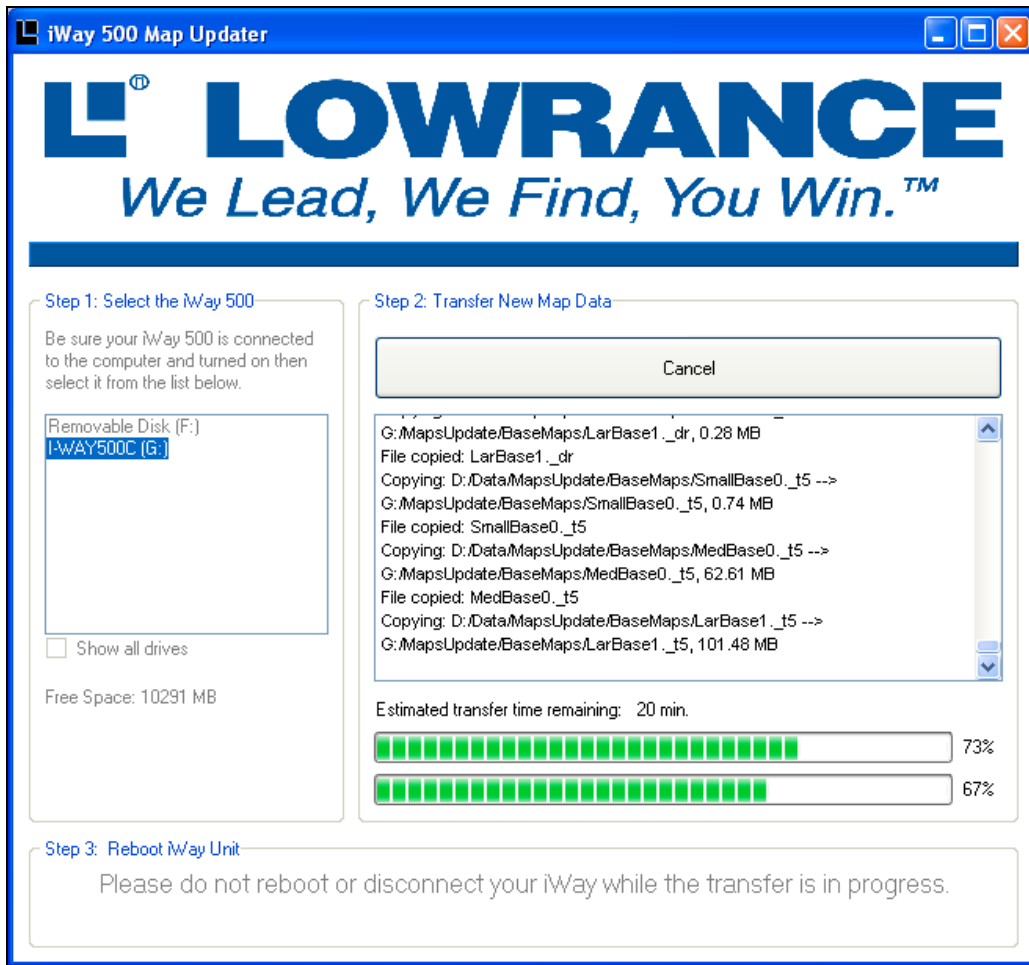
Installation Instructions

1. Disable antivirus software before starting the updates. (Remember to turn antivirus software back on after the updates are finished.)
2. Connect the iWAY 500c to your computer with the unit's USB cable.
3. Turn on the iWAY 500c.
4. Insert the Update DVD into your computer's DVD drive. The update program will launch automatically.



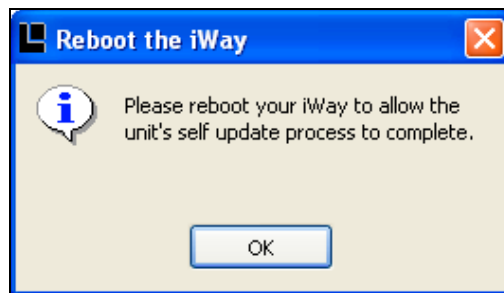
Software update window with Removable Disk (F:) selected. In this example, Removable Disk (F:) is the drive that corresponds with the iWAY 500c; your computer may differ. The Transfer Data button is active.

- A list of removable drives will appear in a box on the left side of the update program window. On some computers, the drive for the IWAY 500c will be listed as I-WAY500C followed by a drive letter, while on others, it may be labeled in a generic fashion, like Removable Disk (H:), etc. Click on the drive that corresponds with your iWAY 500c.
- A Data Transfer button will become active, as shown in the previous figure. Click the button to start transferring update files to the iWAY 500c hard drive.



Software update window with I-WAY500C (drive G: in this example) selected from the drive list. The drive will not be listed as "I-WAY500C" on all computers. The progress bars at the bottom of the window indicate the update is underway. The estimated transfer time, listed above the progress bars, shows the time remaining as 20 minutes. The various components of the update are scrolling in the large window beneath the cancel button.

- When the update program shows that data transfer is complete, a message will pop-up asking you to reboot the iWAY. Close the message and the update program. Disconnect the USB cable from your computer and the iWAY 500c, then turn off the unit.



When the data transfer is completed, you will be prompted to turn your iWAY 500c off and on. That will allow the unit to begin installing the updates transferred from the Software Update DVD.

- Turn the iWAY 500c back on. The software update will install automatically.