



Read Me First!

Making USB Connections Between iWay™ 500C and Computers

This instruction sheet supplements your iWay 500C manual and describes the proper methods for connecting and disconnecting the GPS unit and a computer with the USB-to-PC cable. This cable allows you to copy or move music files from a computer to the iWay 500 hard drive.

CAUTION:

Connecting the iWay and your computer incorrectly will prevent you from successfully transferring music files to the unit. In some cases, connecting incorrectly may corrupt the hard drive partition used for music storage. This would result in loss of any music files already loaded in the unit, and would require you to reformat the music partition on the unit's hard drive.

The iWay 500C GPS unit acts like an additional removable disk drive when connected to a computer running the Microsoft® Windows® 2000 or Windows® XP operating systems. The iWay is not compatible with earlier Windows versions.

Connecting

1. Turn on the iWay and wait for it to power up.
2. Plug in the cable's USB connector to the USB port on your computer and connect the cable's other end to the iWay. The computer will recognize the iWay and assign it a drive letter.
3. Transfer music files to the iWay as you would normally move or copy files, following your computer's operating system instructions.

Disconnecting

Windows XP

1. Wait until any file operation (such as transferring files) is finished. Copying files to the iWay is complete when the copy dialog box goes away.
2. Disconnect the cable from the computer and the iWay. The computer and GPS unit are ready for other tasks.

Windows 2000

Wait until any file operation (such as transferring files) is finished. Confirm that your file operation is complete by using the Eject command:

1. Right-click the iWay drive letter. (This can be found by first double-clicking the "My Computer" icon on the Windows desktop.)

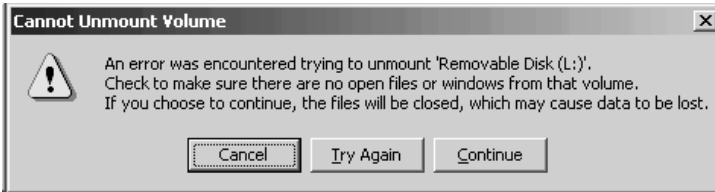
2. If the file is still copying (or another file operation is under way), you will see the standard Windows hourglass symbol. This indicates the unit's hard drive is still active. When the hourglass disappears, the file has finished copying. Unplug the USB cable and resume other tasks.

3. If you right-click the reader's drive letter and instead of the hourglass symbol a pop-up menu appears, click **EJECT**.

A. If no "wait" or warning message appears, unplug the USB cable and resume other tasks.

B. If a "wait" message appears, follow the directions and give the unit a few moments to finish the file operation, then repeat the Eject command. If no other message appears, unplug the USB cable.

C. If you click **EJECT** and a "Cannot Unmount Volume" message appears, click **CONTINUE**. You can now safely unplug the USB cable.



Cannot Unmount Volume message. This may appear when trying to Eject the iWay while using Windows 2000 operating systems.

Remember: No matter what computer operating system you are using, you must always wait until any file operation is finished before you disconnect the USB cable. If you have questions, refer to your computer operating system instructions to determine the completion indicators for various file operations.