

# EP-50 Storage Device Electronic Probe Installation Instructions

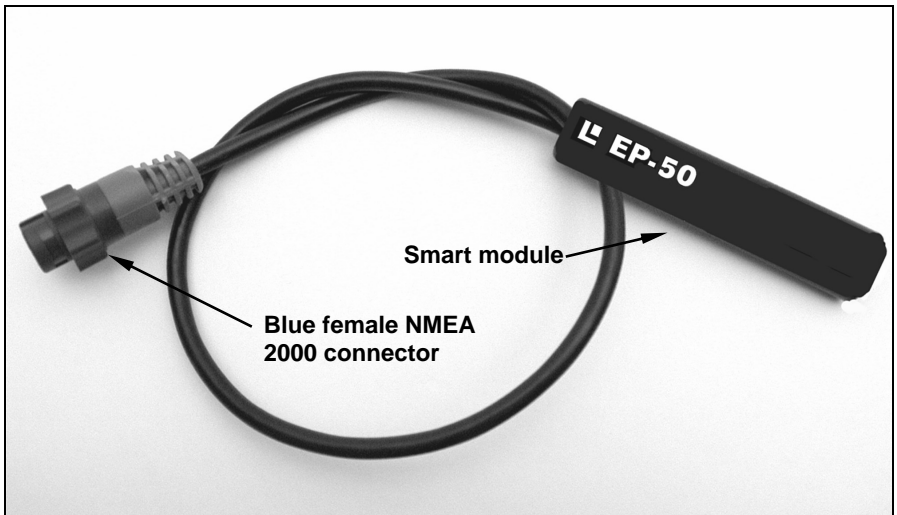
This instruction sheet tells how to connect your EP-50 storage device to a NMEA 2000® network using LowranceNET™ network components. You must refer to your digital gauge, sonar or GPS unit's manual for sensor operation instructions.

## **CAUTION:**

*Installing LowranceNET NMEA 2000 devices is **significantly different** from installing earlier Lowrance components without NMEA 2000 features. You should read all of the installation instructions before proceeding. You should decide where to install all components before drilling any holes in your vessel.*

Some sonar or GPS units may require: 1. a software upgrade to display NMEA 2000 data correctly; and 2. a manual addendum describing how to operate the sensor. You can download these free and get additional information on the NMEA 2000® compatible LowranceNET™ system at our web site, [www.lowrance.com](http://www.lowrance.com).

All Lowrance NMEA 2000 capable devices are either NMEA 2000 certified or certification is pending. See our web site for the latest product status information.



The EP-50 storage device.

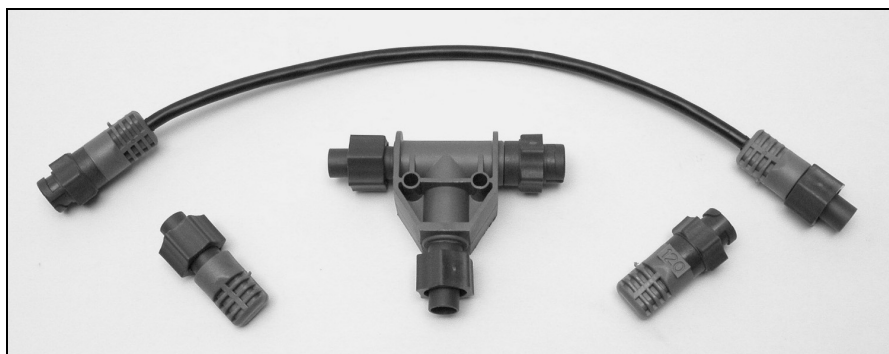
The EP-50 consists of a blue female locking cable connector and a smart module. It stores NMEA 2000 fuel information about your vessel, which includes Fuel Used, Trip Fuel Used and Seasonal fuel usage.

Refer to your display unit's operation manual or manual addendum for instructions on how to clear out information stored in EP-50 storage device memory.

The EP-50, like other Lowrance Electronic Probe (EP) sensors, is designed only for use with a NMEA 2000 Network. It *MUST* be connected to a NMEA 2000 network or it *WILL NOT* function.

### **Tools and Supplies**

Your EP sensor packs with a T connector needed to attach it to a LowranceNET NMEA 2000 network. If you are connecting to an existing LowranceNET network, those are all the electronic components you need. If this is the first sensor you are connecting, you will also need a one-time purchase of a LowranceNET Node Kit.



**LowranceNET Node Kit for a NMEA 2000 network. Includes a 2-foot extension cable, T connector, 120-ohm male terminator and 120-ohm female terminator.**

For complete instructions on setting up a new NMEA 2000 network or expanding an existing one, see the other document packed with your EP-50 Storage Device, "*Setup and Installation of NMEA 2000 Networks, General Information,*" part number 988-0154-172. If that document is missing, it can be downloaded free at [www.lowrance.com](http://www.lowrance.com).

### **Installation**

To install the EP-50 Storage device, route the sensor's cable connector to the T on the network backbone where you intend to attach it and plug it in.

### **Connecting to a NMEA 2000 Network**

A network bus is an installed and operational network cable (backbone) running the length of your boat, already connected to a power supply

and properly terminated. Such a bus provides network connection nodes at various locations around your boat.

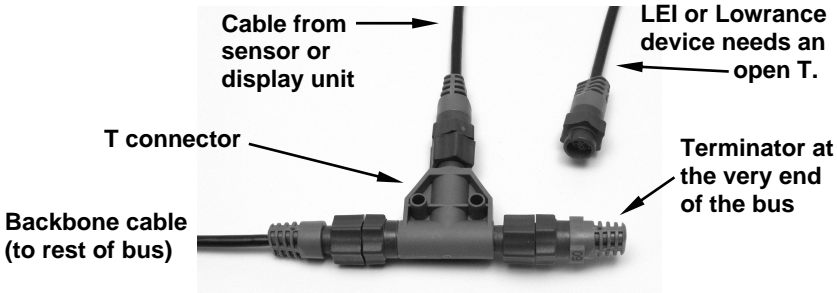
This is similar to the telephone wiring in a house. If you pick up a phone in your living room, you can hear someone talking into the phone in the bedroom.

### Network Nodes

A network bus is built of network nodes spread along a backbone. Network nodes are made by fitting T-shaped connectors into the backbone (using the sockets on the sides), and attaching a display unit or sensor at the bottom of the "T."

Using our telephone example, the T connectors are similar to telephone jacks. The backbone is like the phone wiring running through a house. Phones in a house must be connected to each other to communicate, and in the same way only sensors and display units plugged into the NMEA network can share information.

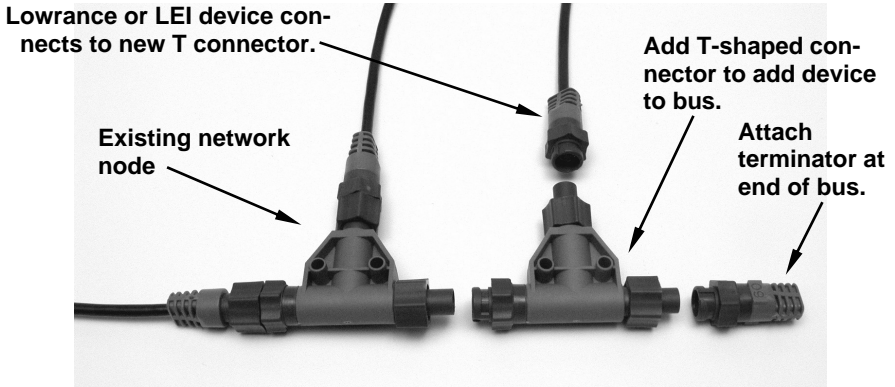
Connections found in the middle of the bus will have one or more of these T-shaped connectors with the backbone cables plugged into both sides. Connections at the end of a network will have the backbone plugged into one side and a terminator plugged into the other, as shown in the following figure.



**NMEA 2000 network node located at the end of a NMEA 2000 bus.**

### Adding a Network Node

You can add a node anywhere along the network backbone where a connection already exists. This connection could be at the end of the network (between a T connector and a terminator), between two T connectors, between a T connector and a backbone extension cable, or between two extension cables. Wherever you want to add the new node, simply separate the sockets of the old connection and attach your new T connector between them.



**Add a new device to a NMEA 2000 bus by attaching a T connector between two T connectors, between a T connector and the end terminator, or between two backbone extension cables.**

If you want to add a node at the end of the line (as shown in the previous figure), remove the terminator from the very last connector, securely attach the new T connector, and then attach the terminator on the new connector. Either method will allow you to add a device.

### **Additional Network Information**

Further instructions on creating or expanding a network are included in the NMEA 2000 network setup booklet, part number 988-0154-172, which came packed with this instruction sheet.

# Notes

# Notes

## **LOWRANCE ELECTRONICS FULL ONE-YEAR WARRANTY**

"We," "our," or "us" refers to LOWRANCE ELECTRONICS, INC., the manufacturer of this product. "You" or "your" refers to the first person who purchases this product as a consumer item for personal, family or household use.

We warrant this product against defects or malfunctions in materials and workmanship, and against failure to conform to this product's written specifications, all for one (1) year from the date of original purchase by you. **WE MAKE NO OTHER EXPRESS WARRANTY OR REPRESENTATION OF ANY KIND WHATSOEVER CONCERNING THIS PRODUCT.** Your remedies under this warranty will be available so long as you can show in a reasonable manner that any defect or malfunction in materials or workmanship, or any non-conformity with the product's written specifications, occurred within one year from the date of your original purchase, which must be substantiated by a dated sales receipt or sales slip. Any such defect, malfunction, or non-conformity which occurs within one year from your original purchase date will either be repaired without charge or be replaced with a new product identical or reasonably equivalent to this product, at our option, within a reasonable time after our receipt of the product. If such defect, malfunction, or non-conformity remains after a reasonable number of attempts to repair by us, you may elect to obtain without charge a replacement of the product or a refund for the product. **THIS REPAIR, OR REPLACEMENT OR REFUND (AS JUST DESCRIBED) IS THE EXCLUSIVE REMEDY AVAILABLE TO YOU AGAINST US FOR ANY DEFECT, MALFUNCTION, OR NON-CONFORMITY CONCERNING THE PRODUCT OR FOR ANY LOSS OR DAMAGE RESULTING FROM ANY OTHER CAUSE WHATSOEVER. WE WILL NOT UNDER ANY CIRCUMSTANCES BE LIABLE TO ANYONE FOR ANY SPECIAL, CONSEQUENTIAL, INCIDENTAL, OR OTHER INDIRECT DAMAGE OF ANY KIND.**

Some states do not allow the exclusion or limitation of incidental or consequential damages, so the above limitations or exclusions may not apply to you.

This warranty does NOT apply in the following circumstances: (1) when the product has been serviced or repaired by anyone other than us; (2) when the product has been connected, installed, combined, altered, adjusted, or handled in a manner other than according to the instructions furnished with the product; (3) when any serial number has been effaced, altered, or removed; or (4) when any defect, problem, loss, or damage has resulted from any accident, misuse, negligence, or carelessness, or from any failure to provide reasonable and necessary maintenance in accordance with the instructions of the owner's manual for the product.

We reserve the right to make changes or improvements in our products from time to time without incurring the obligation to install such improvements or changes on equipment or items previously manufactured.

This warranty gives you specific legal rights and you may also have other rights which may vary from state to state.

**REMINDER:** You must retain the sales slip or sales receipt proving the date of your original purchase in case warranty service is ever required.

**LOWRANCE ELECTRONICS  
12000 E. SKELLY DRIVE, TULSA, OK 74128  
(800) 324-1356**

## How to Obtain Service...

### ...in the USA:

Contact the Factory Customer Service Department. Call toll-free:

**For Lowrance: 800-324-1356. For Eagle: 800-324-1354**

8 a.m. to 5 p.m. Central Standard Time, M-F

*Lowrance Electronics and Eagle Electronics may find it necessary to change or end their shipping policies, regulations and special offers at any time. They reserve the right to do so without notice.*

### ...in Canada:

Contact the Factory Customer Service Department. Call toll-free:

**800-661-3983**

**905-629-1614 (not toll-free)**

8 a.m. to 5 p.m. Eastern Standard Time, M-F

### ...outside Canada and the USA:

Contact the dealer in the country where you purchased your unit. To locate a dealer near you, see the instructions in paragraph number 1 below.

## Accessory Ordering Information

LEI Extras™, Inc. is the accessory source for sonar and GPS products manufactured by Lowrance Electronics and Eagle Electronics. To order Lowrance or Eagle accessories, please contact:

1) Your local marine dealer or consumer electronics store. To locate a Lowrance dealer, visit the web site, [www.lowrance.com](http://www.lowrance.com), and look for the Dealer Locator. To locate an Eagle dealer, visit the web site, [www.eaglesonar.com](http://www.eaglesonar.com), and look for the Dealer Locator. Or, consult your telephone directory for listings.

2) U.S. customers: LEI Extras Inc., PO Box 129, Catoosa, OK 74015-0129  
**Call toll free in the U.S., 800-324-0045**, 8 a.m. to 5 p.m. Central Standard Time, M-F, or visit our web site [www.lei-extras.com](http://www.lei-extras.com).

3) Canadian customers: Lowrance/Eagle Canada, 919 Matheson Blvd. E. Mississauga, Ontario L4W2R7 or fax 905-629-3118.

Call toll free in Canada, 800-661-3983, or dial 905 629-1614 (not toll free), 8 a.m. to 5 p.m. Eastern Standard Time, M-F.



Pub. 988-0154-521

Printed in USA 060506

© Copyright 2006  
All Rights Reserved  
Lowrance Electronics, Inc.